

The Dynamic Indicators of Basic Early Literacy Skills (DIBELS Next) are a set of procedures and measures for assessing the acquisition of early literacy skills. They are designed to be short fluency measures used to regularly monitor the development of early literacy skills and early reading skills.

DYNAMIC
INDICATORS
BASIC
EARLY
LITERACY
SKILLS

DIBELS Next can be used as a benchmark assessment and progress monitoring.

DIBELS Next can help teachers identify students who may be at risk for reading difficulties, and track students progress by administering the tests three times a year (September, January, and May).

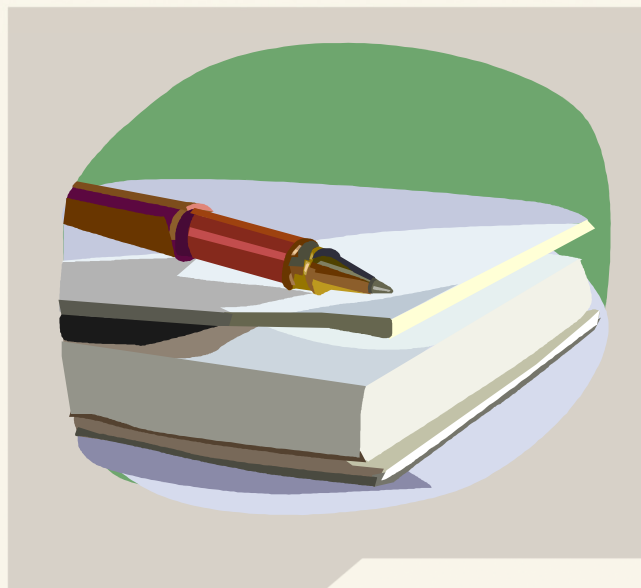
Monitor at-risk students while they receive additional, targeted instruction.

With six measures in DIBELS Next, teachers can identify areas to target instructional support for individual students.

Examine the effectiveness of your school's instructional supports.

After identifying target areas for at-risk students, using DIBELS Next as progress monitoring can inform instructional staff of the effectiveness of the instructional supports in place. If students are not making progress, adjustments can be made to support the student's learning needs.

DIBELS Next is comprised of six measures that function as indicators of the essential skills that every child must master to become a proficient reader.



Name of DIBELS Next Measure	Basic Early Literacy Skill Measured	Grades Used for Benchmark Assessment/Screening
First Sound Fluency (FSF)	Phonemic Awareness	Kindergarten
Letter Name Fluency (LNF)	Indicator of risk; not a measure of an essential basic early literacy skill	Kindergarten, Early First Grade
Phoneme Segmentation Fluency (PSF)	Phonemic Awareness	Kindergarten, Early First Grade
Nonsense Word Fluency (NWF)	Alphabetic Principle and Basic Phonics	Kindergarten, First Grade, Early Second Grade
DIBELS Oral Reading Fluency (DORF)	Advanced Phonics with Word Attack Skills, Accuracy and Fluency with Connected Text, Reading Comprehension	First-Third Grades
Daze	Reading Comprehension	Third Grade